

Materials

Please note that the printed samples only serve as indication of the color.

Wood

Wood is a natural material and no two trees are the same. Each piece of furniture is a natural reflection of the specific wood it is made from and has its own unique wood grain. Therefore, despite our careful selection, there may be variations in texture or colour. Please allow for localised light or dark discolouration, which often only becomes apparent after processing.

It is important for wood to maintain its moisture content. To prevent the wood from ‘moving’ (shrinking or expanding), we recommend keeping the relative humidity in the room as constant as possible (around 60%). The temperature should also be kept as constant as possible.

Wood discolours under the influence of (sun)light and takes on its final colour after a few months. In the case of extendable tables, the inserts should therefore also be exposed to light during these months. They can then be stored (if they are separate inserts) or retracted (integrated inserts).

As wood discolours when exposed to (sun)light and takes on its final colour after a few months, re-ordered furniture will never have the same colour.

Solid wood (Arco premium quality)

Our solid wooden table tops are composed of solid wooden strips of varying widths which are glued together. The tables can be finished with mat-natural finish (hereafter N-finish), project finish (hereafter P-finish) or with oil. Natural characteristics of the wood such as knots, deformations, black spots etc. are inevitable. With premium quality solid wood, open defects must never be visible, (however, they may for instance be found on the underside of the table top). Solid wood is extremely sensitive to fluctuations in temperature and humidity, which could cause the wood to “work” and create e.g. little cracks in the course of time.

Solid wood (Local Wood)

Local Wood is wood from the region around the Arco factory in Winterswijk. Local Wood does not hide any ‘imperfections’ in the wood. Knots are often part of the table top and give it its own character. These knots are never open, they are closed.

Duramas (semi-solid wood)

Duramas is composed of a thin layer of premium quality solid wood, which is glued onto the top and bottom of a supporting core panel (e.g. poplar), which provides for an extremely stable sandwich construction. The advantage of Duramas is that high quality wood is sparingly used, while the top layer is still strong enough to be sanded and oiled like solid wood. Duramas is sensitive to fluctuations in temperature and humidity which could cause the wood to “work” and create little cracks in the course of time.

Veneer

Veneer is a thin layer of wood glued onto a core panel. The advantage of veneer is that it is real wood, with the corresponding warm appearance and tactility, but it hardly ‘works’ (shrinking and expansion). Arco uses a special method where the veneer sheets are mirrored so that the patterns in the wood optically continue, thereby creating an even wood image.

Finishes

Stain colors

Our oak furniture (including solid wood, duramas and veneer) can be stained in different colors. Staining is a technique where the color is applied to the wood while the wood structure remains clearly visible. Stained wood can be finished with N-finish or P-finish. Finishing with oil is not possible.

Smoked oak

Oak contains tannin, the same substance that makes red wine and black tea ‘dry’. This substance reacts to the ammonia vapours that are dispersed in the drying chamber during the drying process. Due to this the wood colors “through and through”. The tanin concentration determines the color, which may vary from light brown, to a warm deepbrown and sometimes almost black. This concentration is influenced by the soil composition and the living environment of the tree and can therefore differ greatly per trunk and even among different sections of the same trunk.

Even though the color is selected during the production process, it is impossible to guarantee that everything will stay in the same color. In other words, color differences always occur in smoked oak. Furthermore, we would like to inform that the smoked oak we use for our tables is no premium quality solid oak. For that reason natural characteristics such as little knots or black spots, deformations, etc. might be visible. Smoked oak can be finished with N- or P-lacquer and oil (only solid).

Brushed oak (only on solid wood)

Brushing creates a relief between softer and harder growth rings. The depth is influenced by the wood’s natural properties: the density, flat or quarter sawn and the structure. There will always be variations in ‘depth’ and ‘coarseness’. The grooves will be deeper in the ‘softer’ wood parts. Cracks cannot be avoided and will hence remain visible. The table top can become somewhat uneven due to the brushing, thereby creating a risk of splinters. When a product from our Local Wood collection will be brushed, whitish spots, knots, differences in color and all other natural properties of ‘Local Wood’ will remain visible. Brushed oak can be finished with an N- or P-lacquer.

Oil finish for solid wood and duramas

Oiled solid wooden and duramas tables show the natural radiance of the wood even better than solid wooden tables with N- or P-finish. Tables with an oil finish are somewhat more sensitive to stains and moisture however, and therefore require some maintenance. Arco solid wooden and duramas tables are treated with a high quality oil, which is only made from ecologically responsible materials. The oil nourishes and protects the wood.

Lacquer finishes for veneer, solid wood, duramas and color lacquer

We only use finishings which meet the highest quality standards. You can choose from two different finishes: N- or P-finish. The two different finishes provide excellent protection for the wood.

N-finish gives the wood an unmistakable matte appearance.

P-finish gives the wood a slight gloss. The P-finish less sensitive to forming stains, and is therefore easier to maintain than N-finish.

Lacquer colors

A wide range of our furniture can be lacquered in various colors, whereby the color is applied on the material. Lacquer colors are not possible for solid wooden and duramas tables.

In addition to the standard P-lacquer finish, N-lacquer is also available for dark colours.

Laminates

HPL Fenix® NTM

Nano technology is used for FENIX® NTM surfaces. The surface is obtained through the next generation of resins, developed by Arpa Industriale. With this technology, FENIX NTM® has access to advanced features such as an extremely mat surface which is soft to touch, protects against fingerprints and provides thermal recovery from minor scratches. This innovative material also has specific properties that facilitate cleaning and no special maintenance is required. FENIX® NTM is resistant to fungus, has improved anti-bacterial properties and is resistant to rubbing, scratching and abrasion.

Forbo Furniture Linoleum

Furniture Linoleum is a bio-based, natural material produced in the Netherlands. Furniture Linoleum does not leave fingerprints, is antistatic and has a pleasant writing surface.

The material is 'alive', develops a patina with use (just like leather) and has a number of associated characteristics. These include small marks, dents or shiny streaks.

Metals

Aluminum

Aluminium is a material that is easy to cast, which means that an aluminium base can be moulded and finished into the desired shape. Aluminium requires little maintenance, it provides a great shape freedom and it is a lightweight material.

Artisanal cast aluminum

For the production of the base of the Joist and Trestle, Arco has chosen for a artisanal cast base (sand casting and Coquille casting). In this production method, aluminum is scooped from a crucible in a molten state and then poured into a mold (made of sand or metal).

Due to the rapid solidification in the mold, a fine-grained structure is formed, similar to the texture of an orange peel. Characteristic of this technique is the presence of small visible holes on the surface. It is also possible for shallow streaks or small bumps to occur on the surface. These characteristics are inherent to this casting process.

Finish: Epoxy fine texture

Epoxy is a thermo-hardening plastic material which adheres to virtually any surface. Epoxy is also abrasion resistant and requires little maintenance. Applying epoxy to metal provides a very durable surface treatment and offers a wide range of colors. We have various epoxy colors available in our collection.

Finish: Mat chrome

Chrome is a resistant surface material that resists scratches well. In case of a base in chrome, a layer of chrome is applied to metal.

Finish: Aluminum

We have aluminium basis available both in brushed and polished versions. Optically, brushed aluminium provides the product with a softer look than polished aluminium.

Concrete

Concrete is composed of the binding agent cement, mixed with water and aggregates such as gravel and sand. By combining the correct amounts, a stone-like and durable material is created which can be shaped as required through a casting process. Concrete has a robust appearance and it is an ideal material for creating a stable table.

Textile

Our seating furniture is available in many fabrics from different manufacturers, but we closely collaborate with Kvadrat (<http://kvadrat.dk>), De Ploeg (www.deploeg.com), Gabriel (www.gabriel.dk/en/) en Camira (www.camirafabrics.com).

For the complete and current fabric list visit www.arco.nl/en/downloads

Leather

Leather groups b and d

Aniline leather is provided with a protective layer, but is not completely covered. With this method of finishing, the natural properties of the leather are retained as much as possible. In use, the leather will obtain its own character, which is mainly determined by the typical gloss (patina) that leather obtains after a period of time.

Semi-aniline and dyed leather

These types of leather are not only colored, but they also have a topcoat that partially covers the natural properties. This type of finishing creates a user-friendly surface.

For the current leather collection visit our website: www.arco.nl/en/downloads

oak: neutrals (solid, semi-solid, veneer)



1000 oak pure



1100 oak natural



1101 oak white



1200 oak grey



1201 oak smoke



1202 oak morado



1300 oak black



1301 oak carbon

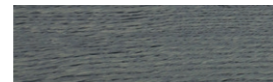
oak: colors (solid, semi-solid, veneer)



1400 oak terra



1401 oak burgundy



1500 oak moss

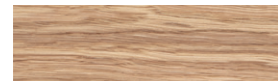


1600 oak ocean



1700 oak dijon

oak: neutrals (solid, semi-solid)



1000 oak pure (oil)



1100 oak natural (oil)



1101 oak white (oil)

oak: smoked (solid, semi-solid)



1000 oak smoked pure

walnut (solid, semi-solid, veneer)



1000 walnut pure

wood finish (solid, semi-solid)



brushed

color lacquer: neutrals

5100 white
(GN.02.88/RAL9010)

5101 beige (F2.05.65)



5200 grey (FN.02.77)

5201 quartz grey
(F7.05.37/RAL7039)

5202 mud (F2.10.50)



5203 silt (F2.10.40)

5301 black
(UN.00.07/RAL 9005)5703 Deep Brown
(C2.04.06/RL8022)

color lacquer: yellow, green, red, blue color groups



5400 clay (C8.20.40)



5401 red (C4.60.30)



5402 burnt red (C4.35.15)

5403 wine red
(B1.16.12/RAL3007)

5500 mute green (H8.07.47)



5501 emerald green (L0.20.40)



5502 moss green (G0.20.30)

5503 deep green
(J5.16.15/RAL6007)

5600 slate blue (P0.03.55)



5601 petrol blue (R0.30.30)



5602 prussian blue (T0.10.30)

5603 deep blue
(U1.11.08/RAL5004)

5700 lime (G0.55.80)



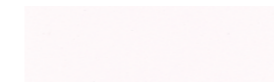
5701 ochre (E8.50.50)



5702 mustard (E4.30.40)

5703 deep brown
(C2.04.06/RAL8022)

epoxy fine texture: neutrals



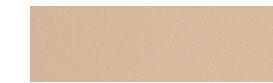
5100 white (RAL9010)



5200 grey (FN.02.77)



5201 quartz grey (RAL7039)



5204 grey beige (RAL1019)



5300 black grey (RAL7021)



5301 black (RAL9005)

epoxy fine texture: colors



5400 clay (C8.20.40)



5403 wine red (RAL3007)



5404 rust (custom Arco color)



5503 deep green (RAL6007)



5600 slate blue (RAL7042)



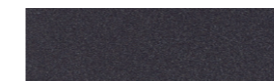
5603 deep blue (RAL5004)



5604 ultramarine (RAL5002)

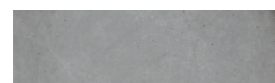


5702 mustard (E4.30.40)



5703 deep brown (RAL8022)

concrete



Natural

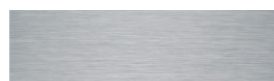
metal



Mat chrome



Aluminum



Stainless steel

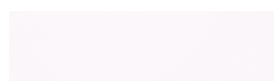
laminates: Fenix



7100 Bianco Male (0029)



7101 Bianco Kos (0032)



7102 Bianco Alaska (0030)



7200 Grigio Londra (0718)



7201 Grigio Antrim (0752)



7202 Beige Arizona (0748)



7203 Grigio Efeso (0725)



7204 Beige Luxor (0719)



7300 Nero Ingo (0720)



7301 Grigio Aragona (0793)



7400 Viola Orissa (0790)



7401 Rosso Jaipur (0751)



7402 Rosso Namib (0789)



7403 Rosso Askja (0770)



7500 Verde Comodoro (0750)



7501 Verde Brac (0773)



7502 Verde Kitami (0794)



7600 Blu Fes (0754)



7601 Blu Shaba (0792)



7602 Azzurro Naxos (0771)



7603 Grigio Bromo (0724)



7700 Cacao Orinoco (0749)

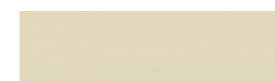


7701 Castoro Ottawa (0717)

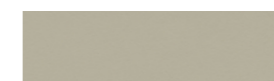


7702 Giallo Evora (0791)

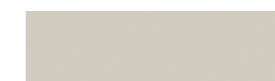
laminates: Forbo Furniture Linoleum



8101 Pearl (4157)



8301 Pebble (4175)



8302 Mushroom (4176)



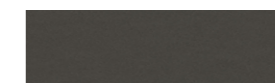
8303 Vapour (4177)



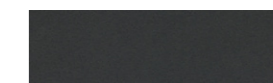
8304 Ash (4132)



8305 Pewter (4155)



8306 Iron (4178)



8307 Charcoal (4166)



8308 Nero (4023)



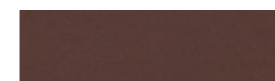
8401 Powder (4185)



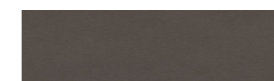
8402 Clay (4001)



8403 Salsa (4164)



8405 Burgundy (4154)



8406 Mauve (4172)



8407 Orange Blast (4186)



8501 Spring Green (4182)



8502 Pistachio (4183)



8503 Olive (4184)



8504 Conifer (4174)



8506 Aquavert (4180)



8601 Midnight Blue (4181)



8602 Smokey Blue (4179)



8701 Leather (4002)



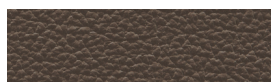
8702 Walnut (4003)

There may be slight colour variations from sample to sample and product to product. Furniture linoleum has certain characteristics that customers should be aware of. Arco cannot be held responsible for these inherent material characteristics. Therefore, Arco cannot accept any complaints in this respect.

Er kunnen lichte kleurvariaties zijn van monster tot monster en van product tot product. Furniture Linoleum heeft bepaalde kenmerken waarvan klanten zich bewust moeten zijn. Arco kan niet verantwoordelijk worden gehouden voor deze intrinsieke materiaal kenmerken. Klachten die hierop betrekking hebben kan Arco derhalve niet accepteren.

Von Muster zu Muster und von Produkt zu Produkt sind leichte Farbabweichungen möglich. Furniture Linoleum verfügt über bestimmte Merkmale, über die der Kunde informiert sein sollte. Arco übernimmt keine Verantwortung für diese Materialeigenschaften und diesbezügliche Beschwerden.

leather



a.MO



d.NG



b.EG



a.ZW



b.HZ



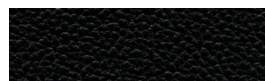
b.HB



b.CL



b.AC



a.BR



c.JD



c.AB



c.BL



d.SK

Our seating furniture is available in our own leather collection. We also work with the following collections from Ohmann (www.ohmannleather.com) 1012 (leather group C), 1010 (leather group D) and for the Close, Laze and Re-volve also with Elmosoft (leather group D). Ohmann leather is possible with the purchase of at least 4 chairs or 1 bench in the same version.

Onze stoelen en banken zijn leverbaar in onze eigen leercollectie, maar wij werken ook met de volgende collecties van Ohmann (www.ohmannleather.com) 1012 (leergroep C), 1010 (leergroep D) en voor de Close, Laze en Re-volve ook met Elmosoft (leergroep D). Ohmann leer kan bij afname van tenminste 4 stoelen/1 bank) in dezelfde uitvoering.

Unsere Sitzmöbel sind in unserer eigenen Lederkollektion lieferbar. Wir arbeiten auch mit den folgenden Kollektionen von Ohmann (www.ohmannleather.com) 1012 (Ledergruppe C), 1010 (Ledergruppe D) und bei Close, Laze und Re-volve auch mit Elmosoft (Ledergruppe D). Ohmann-Leder ist möglich bei einer Bestellung von mindestens 4 Stühlen oder 1 Bank in der gleichen Ausführung.

textile

Our seating furniture is available in many fabrics from different manufacturers. Among others, we work with with Kvadrat (<http://kvadrat.dk>), De Ploeg (www.deploeg.com), Gabriel (www.gabriel.dk/en/) en Camira (www.camirafabrics.com). The fabric group classification can be found in the fabric list at www.arco.com/downloads

Onze stoelen en banken zijn leverbaar in vele stoffen van verschillende fabrikanten. Wij werken onder andere met Kvadrat (<http://kvadrat.dk>), De Ploeg (www.deploeg.com), Gabriel (www.gabriel.dk/en/) en Camira (www.camirafabrics.com). De stofgroep indeling is te vinden in de stoffenlijst op www.arco.nl/downloads

Unsere Sitzmöbel sind in zahlreichen Stoffen von verschiedenen Herstellern lieferbar. Wir arbeiten unter anderem mit Kvadrat (<http://kvadrat.dk>), De Ploeg (<http://www.deploeg.com>), Gabriel (www.gabriel.dk/en/) und Camira (www.camirafabrics.com). Die Klassifizierung der Stoffgruppen finden Sie in der Stoffliste auf www.arco.nl/downloads